

### IMPORTANT SAFETY INFORMATION

This product is for household use. When using electrical products, especially when children are present, basic safety precautions should always be followed, including:

#### **ANGER** – To reduce the risk of electrocution:

- Do not use while bathing.
- Do not place or store product where it can fall or be pulled into a tub or sink.
- Do not place in or drop into water or other liquid
- Do not reach for this device if it has fallen into water.

#### **ARNING** – To reduce the risk of burns, electrocution, fire, or injury to persons:

- **NEVER look at the UV-C light when it's on. Looking at the UV-C light with the naked eye may cause severe burns to the eye.**
- Closely supervise use by, on or near children or invalids.
- Use this product only for its intended use as described in this guide.
- Never operate this product if it has a damaged cord or plug, if it is not working properly, if it has been dropped or damaged, or dropped into water. Return it to the place of purchase or service center for examination and repair.
- Never place the product on a soft surface such as a bed. Keep any air openings free of lint, hair, and the like.
- Do not use outdoors or operate where aerosol (spray) products are being used or where oxygen is being administered.
- The AC adapter included with your unit is made specifically for this product. Do not use it with another appliance, and do not use an adapter from any other electrical device in its place.

**NOTE:** This product is not designed to diagnose, prevent, monitor, treat, or alleviate disease.

#### **OPERATING CONDITIONS**

At an ambient temperature of 70°F (21°C) the operating temperature of this appliance is 80–85°F (26–29°C).

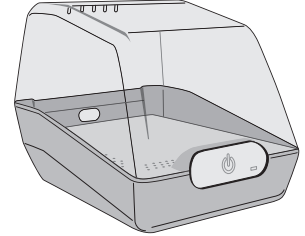
UV-C lamp will shut off if lid is opened during the sanitizing cycle. The lamp also shuts off at the end of the 5 minute cycle time.

#### **WARRANTY SERVICE (OUTSIDE NORTH AMERICA)**

Contact the place of business where you obtained your drying unit.

**DRYBOOSTuv**

**DRYBOOSTuv**  
DRY • RECHARGE • SANITIZE



# Quick Start Guide

**DRYBOOSTuv**

1-800-327-8547

dryboostuv.com | info@eartech.com

**EAR TECHNOLOGY CORPORATION®**

Ear Technology Corporation's Johnson City facilities have a Quality Management System certified to ISO 9001:2015 for the Design, Manufacture, Sale, and Distribution of Hearing Healthcare Products.

Certified—Service Disabled Veteran Owned Small Business



#### Power Supply Information:

INPUT: 100-240V 50/60 Hz, 0.8 A    OUTPUT: 9V 3 A

Power supplies used with this product are certified to UL. Consult label on enclosed power supply for certifications.

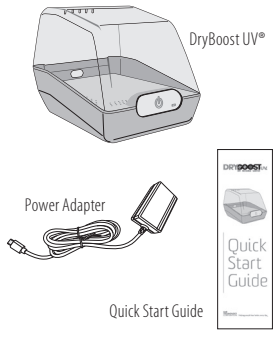
DRYBOOST UV MODEL: DBU

©DRYBOOST UV. ALL RIGHTS RESERVED. WORLDWIDE PATENTS AT EARTECH.COM/PATENTS

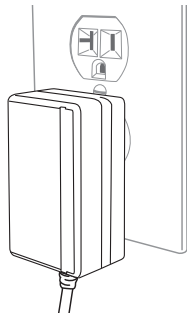
DESIGNED BY EAR TECHNOLOGY CORP. IN THE USA. MADE IN CHINA.

**EAR TECHNOLOGY CORPORATION®** Helping people hear better, every day.

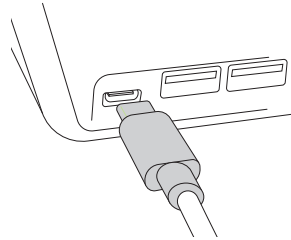
Package Contents



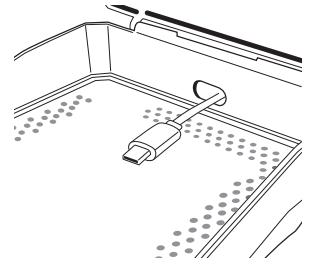
1 Plug the power plug into an electrical outlet.



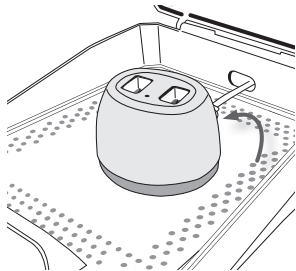
2 Plug the other end into the Type-C USB port on DryBoost UV.



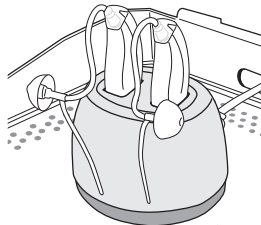
3 Thread your base charging cable through the opening in the back of DryBoost UV.



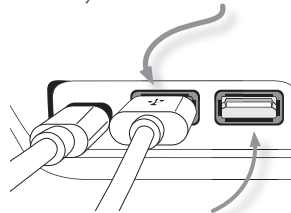
4 Place your charging base onto the tray, and plug your charging cable into your charging base.



5 Add your instruments to the charging base. Position the charging base so the tips and tubes receive maximum exposure from the UV-C lamp.

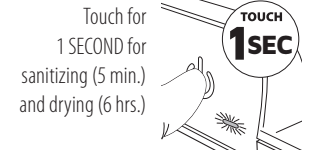


6 Plug in the USB Type-A end of the charging cable into the back of DryBoost UV.

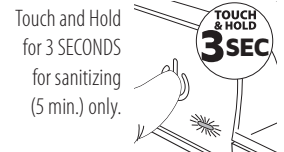


*DryBoost UV has an additional USB port in the back for charging other items (phone, watches, or other electronic devices).*

7 Close the lid and touch the power button.



— OR —



DryBoost UV will shut off automatically at the end of the cycle.



Remember to register your DryBoost UV  
[www.dryandstore.com/warranty](http://www.dryandstore.com/warranty)

Need assistance?  
 1-800-327-8547 | [info@eartech.com](mailto:info@eartech.com)

**NOTE**

**Interrupt the cycle at any time by lifting the lid. The cycle will not restart once the lid is closed. Touch the power button for one second to restart the cycle.**